

High Temperature Gas Heater

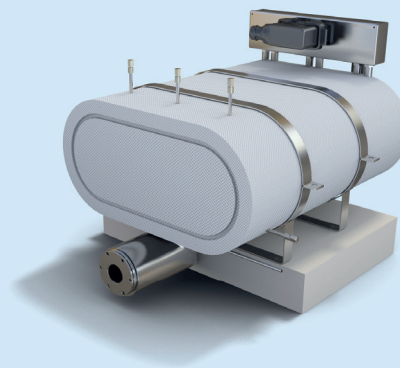


GAS HEATERS FOR HIGHEST TEMPERATURE LEVELS

Our electrical gas heaters achieve gas outlet temperatures up to 850 °C within a wide flow range and low pressure losses. The control of the gas outlet temperature works with outstanding accurateness with minor influence of heat radiation. Innovative insulation materials and the compact design of the gas heater ensure an efficient energy use. Due to the modular design, we can adapt our standard heaters easily to meet the requirements of our customers.

KEY FEATURES

- heat up of air and other process gases
- gas outlet temperatures up to 850°C in a wide flow range
- max. inlet temperature 700°C (for H series)
- heat up rates up to 35 K/min
- modulation range of volume flow 1:10
- low pressure loss
- approved cycle stability
- high efficiency due to a compact modular design



gas heater for higher flow rates

OPTIONAL

- flexible in geometry and power range
- customer specific fittings
- heat up rates up to 600 K/min for small flow rates (max. 15 slpm)
- modulation range of volume flow 1:20
- independent temperature control and safety unit
- steel or single component housing



gas heater with compact steel housing

Additional to our standardised products we manufacture customised components. Please send us your special requirements and we will send you an offer corresponding to your needs:

- gas inlet temperature [°C]
- gas outlet temperature [°C]
- volume flow range [slpm]
- max. permissible pressure loss [mbar]
- process gas composition
- max. ambient temperature [°C]

OVERVIEW OF ELECTRICAL GAS HEATERS

Electrical gas heaters are available with cold (GH-C) and hot (GH-H) gas inlet temperature and with internal (GH-I) and external (GH-E) heating, for example:

GH gas heater	–	IH internal heated, hot inlet temperature	200 max. flow rate (slpm)
-------------------------	---	--	-------------------------------------

All below listed gas heater types are also available as H version with hot inlet temperature. The power input is designed according to the minimum inlet temperature.

overview of the most important parameters of the standard products, variations on inquiry

type	power in W	volume flow in slpm	gas outlet temperature in °C	pressure drop in mbar	dimensions H x W x D in mm
GH-IC60	2600	6 ... 60	max. 850	≤ 50	200/200/400
GH-IC200	5000	10 ... 200	max. 850	≤ 50	200/200/600
GH-IC400	10000	30 ... 400	max. 850	≤ 80	200/350/600
GH-IC500	12000	40 ... 500	max. 850	≤ 80	200/350/600
GH-IC700	18000	50 ... 700	max. 850	≤ 100	200/500/600
GH-IC1000	24000	80 ... 1000	max. 850	≤ 100	200/500/600
GH-EC10	750	1 ... 10	max. 750	≤ 20	120/120/400
GH-EC100	3000	10 ... 100	max. 750	≤ 80	150/150/300

operational area of the gas heaters with regard to volume flow and gas outlet temperature

	GH-E	GH-I
volume flow in slpm: 1 - 10	●	
volume flow in slpm: 10 - 100	●	●
volume flow in slpm: 100 - 1000		●
gas outlet temperature < 750 °C	●	●
gas outlet temperature up to 850 °C		●

